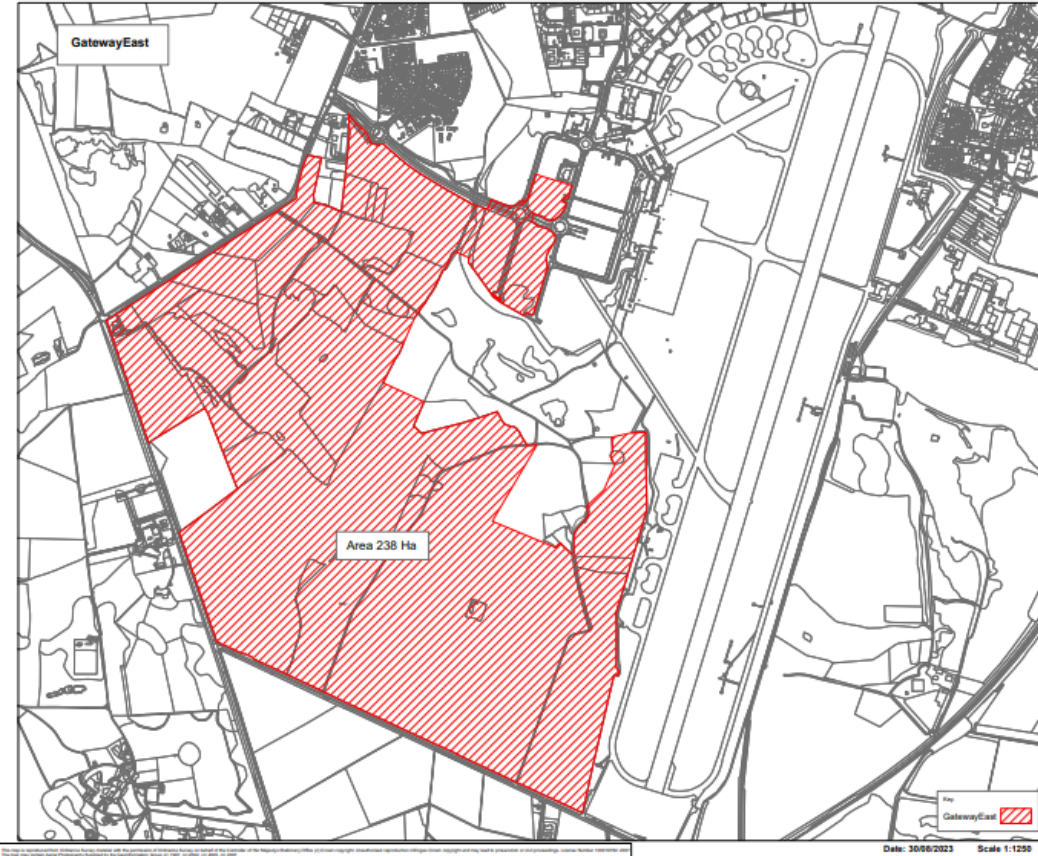
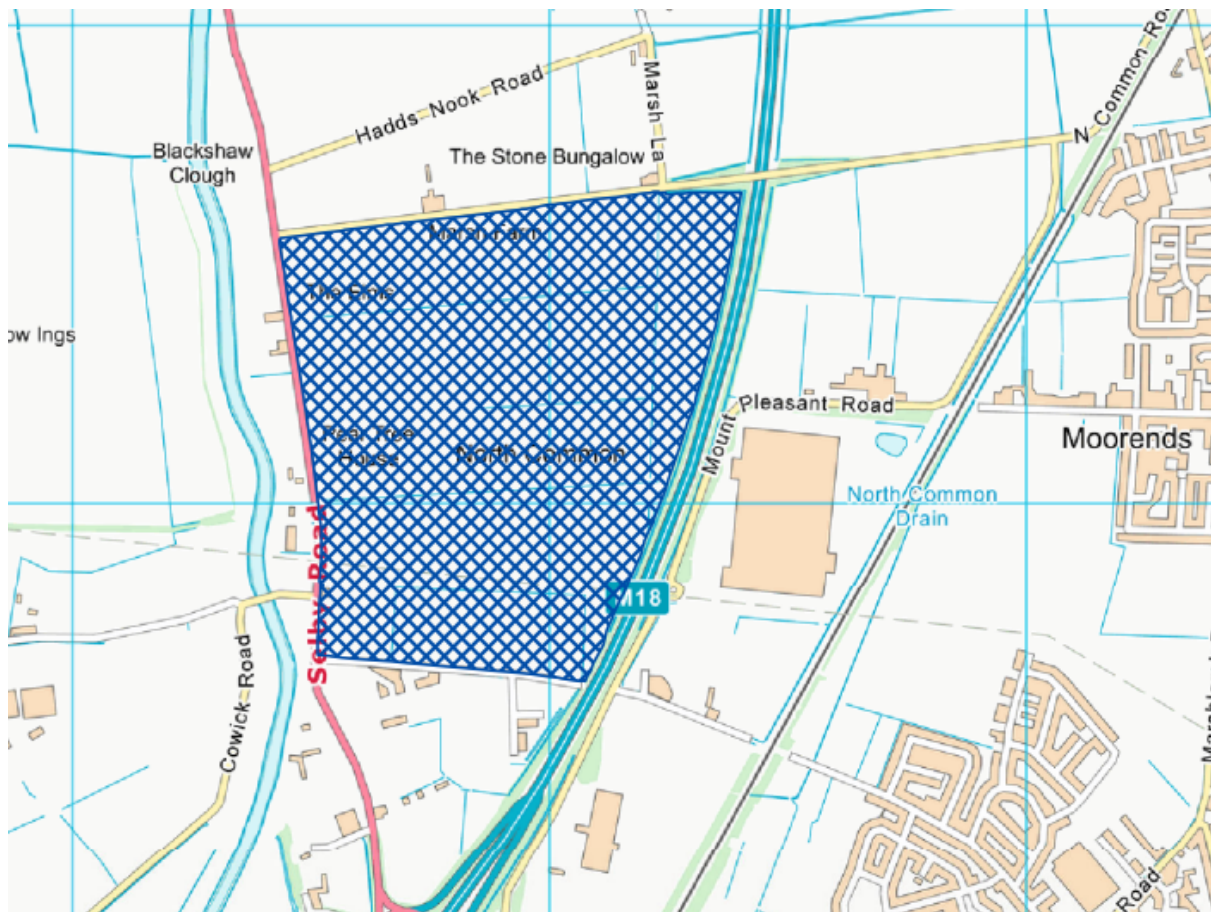


Annex B – Investment Zone Opportunity Sites Maps

1. GatewayEast (238 Ha) (IZ / BRR site)

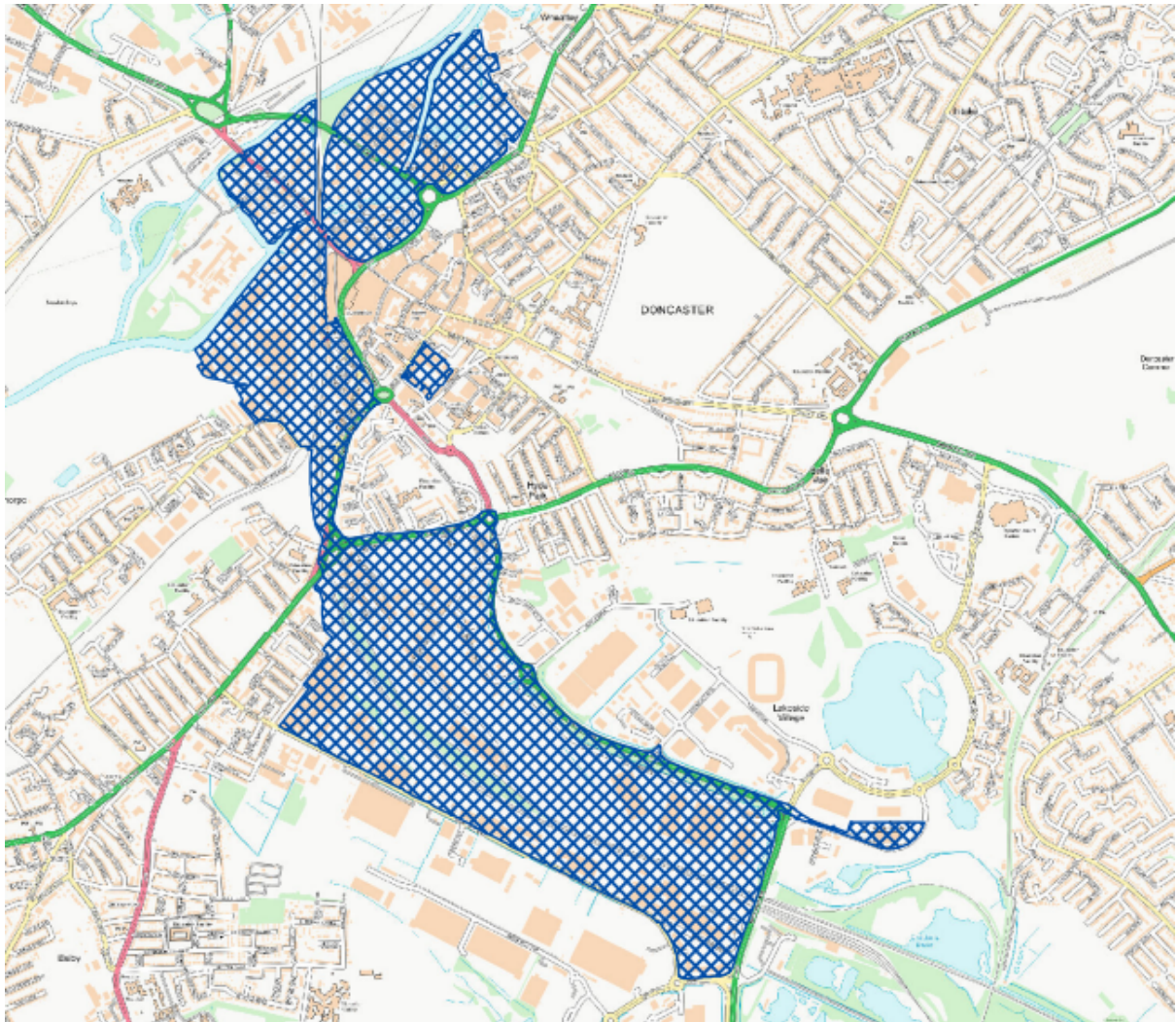


2. Thorne North



Total Ha	73.63Ha
Developed Employment Land	0.00Ha
Undeveloped Employment Land	73.63Ha (has planning permission)

3. City Centre Corridor



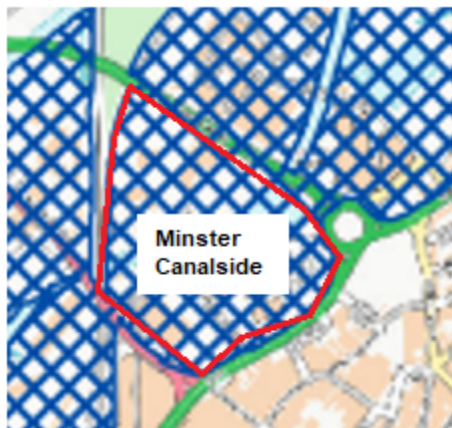
Total Ha (boundary as drawn)

200Ha

3.1. Waterfront (13.3 Ha)



3.2. Minster Canal (12.9 Ha)



3.3. Marshgate - Underdeveloped Site (6 Ha)

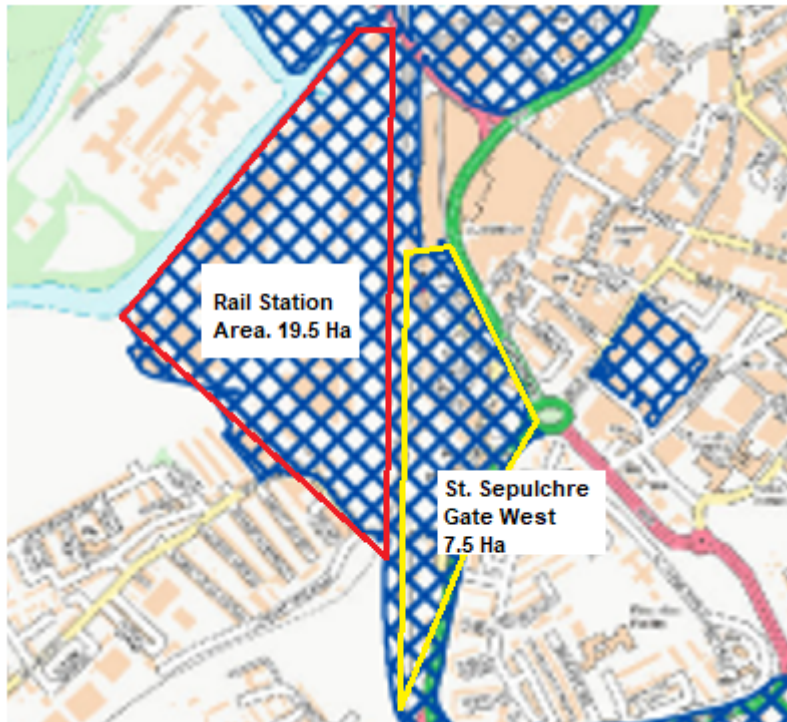


3.4. Marshgate – Existing Employment Policy Area (Total 15 Ha)

Network Rail Offices built here in 2020.



Rail Station and St Sepulchre Gate West – Total 27 Ha

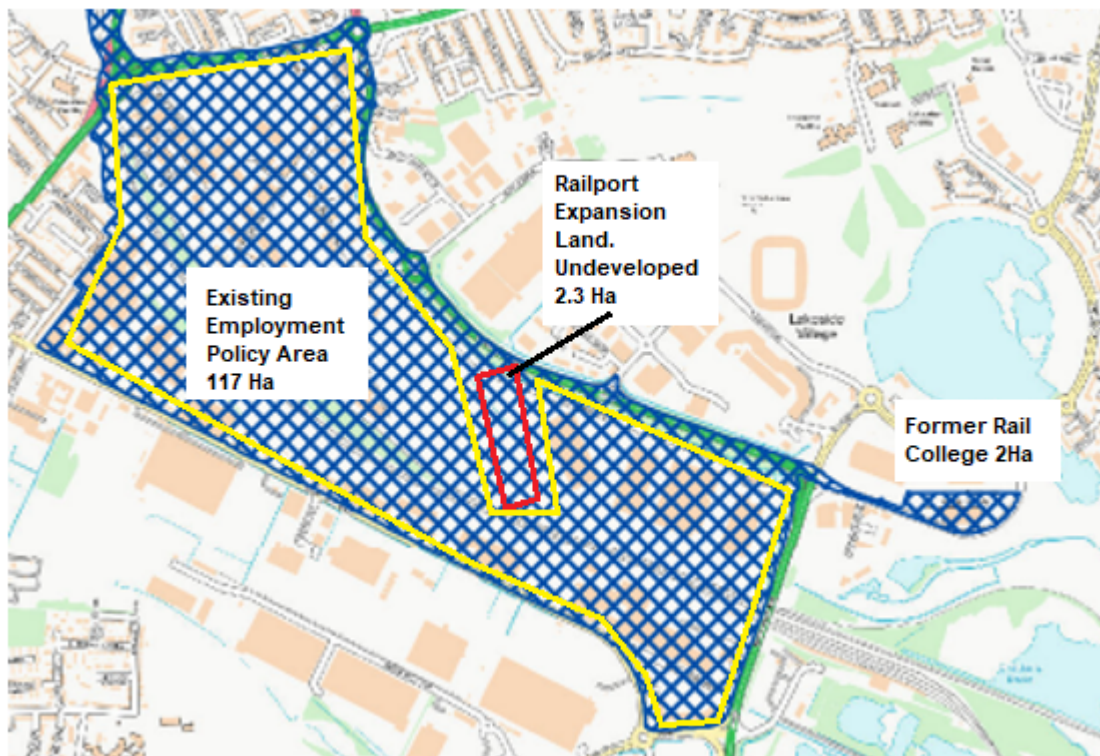


3.5. Waterdale (2.5 Ha)

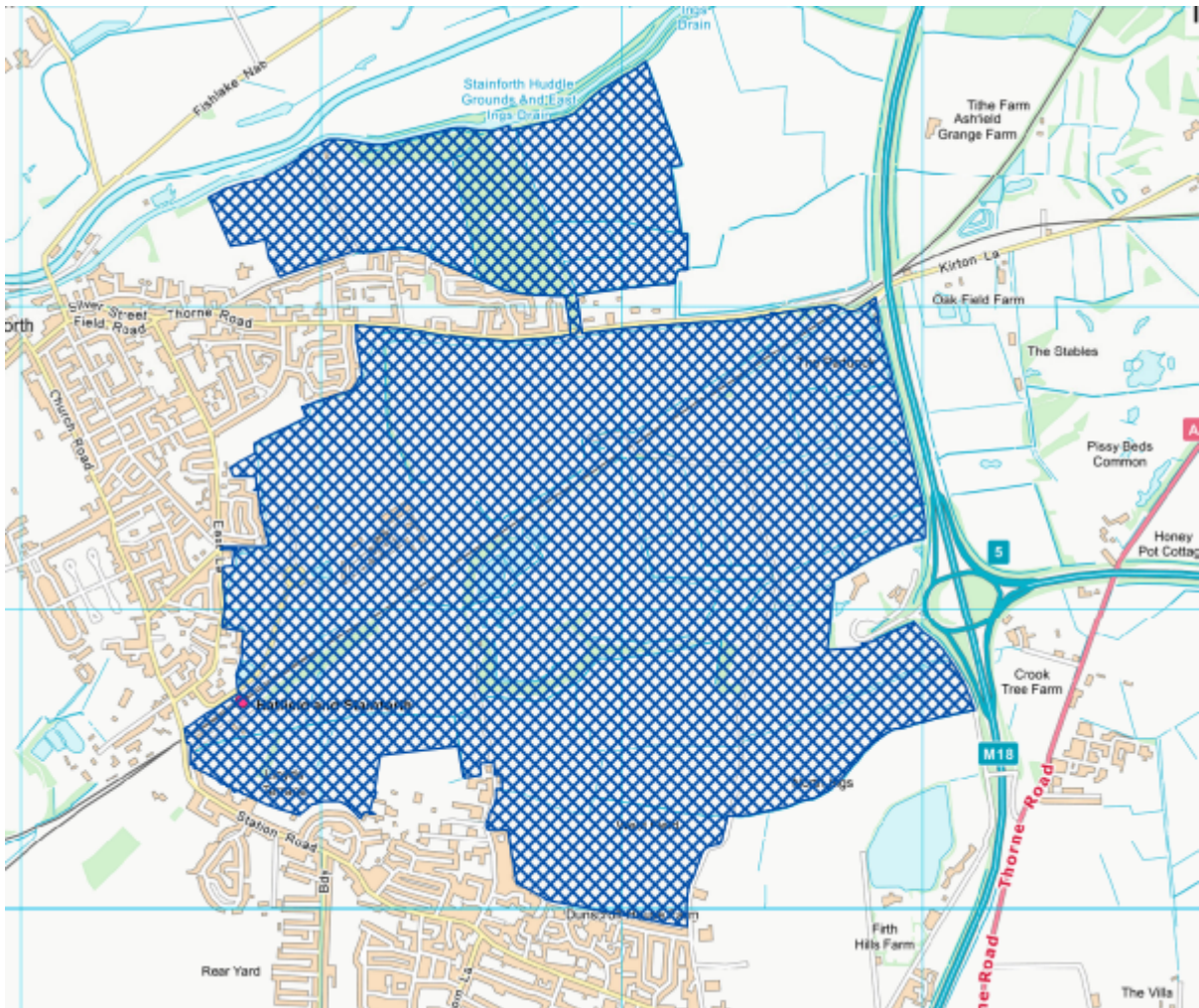


3.6. Balby Carr (Total 121 Ha)

Various plots developed in recent years. Several sites have current permissions.



4. Unity



Total Ha	428Ha
Developed Employment Land	0.00Ha
Undeveloped Employment Land	92.70Ha (all with planning permission). There is the potential for more employment land to come forward.